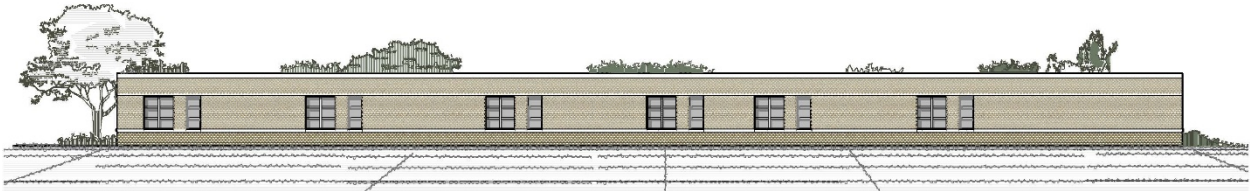


LEGAL NOTICE

Request for Subcontractor Bids for Hillsborough County Public Schools for the Wimauma Elementary School Classroom Addition Construction Project.

Halfacre Construction Company hereby solicit subcontractor bids from qualified subcontractors for the construction of a new 21,000-square-foot classroom addition with covered walkways for Wimauma Elementary School.



Construction Manager Point of Contact: Priscilla Harsham, Construction Manager at 941-302-4650 or pharsham@halfacreco.com with any questions regarding this project.

Payment and Performance Bond: Bidders with a bid of \$100,000 or more shall be able to provide a 100 percent Payment & Performance Bond prior to commencement of work.

Bids will be received via email by **Wednesday, August 19, 2020**. Bids shall be submitted in the proper bid form with required attachments in accordance with the Instructions to Bidders in the Bid Manual Packages and associated documents.

The anticipated release of the GMP package documents for this project will be issued via Procore by Friday, July 24, 2020. Please contact Priscilla Harsham at pharsham@halfacreco.com to obtain documents.

No bidder may withdraw his bid within a period of one hundred and eighty (180) days after the actual date of opening thereof.

The construction manager reserves the right to waive any formalities, technicalities, or irregularities in; or reject any or all bids; or to re-advertise for bids and award or refrain from awarding the Contract for the work.

Halfacre Construction Company, on behalf of Hillsborough County Public Schools, in accordance with the provisions of Section 287.133, Florida Statutes shall affirm that "A person of affiliate who has been placed on the convicted Vendor list following a conviction for a public entity crime may not submit a bid on a contract to provide any goods or services to a public entity, may not submit a bid on a contract with a public entity for the construction or repair of a public building or public work, may not submit bids on leases of real property to public entity, may not be awarded or perform work as a contractor, supplier, subcontractor, or consultant under a contract with any public entity, any may not transact business with any public entity in excess of the threshold

amount provided in Section 287.017, for CATEGORY TWO for a period of 36 months from the date of being placed on the convicted vendor list.

Halfacre Construction Company is an Equal Opportunity Employer and complies with all local and federal regulations relative to nondiscrimination on the grounds of race, color, age, religion, sex, handicap or national origin.

Several trade packages are included in the request for bids, such as electrical, plumbing, concrete, masonry and heating, ventilation and air conditioning (HVAC), among other trades.

The scopes of work listed above are to clarify the intentions of the build, but in no way limit the scope of work covered under this agreement by the requirements per the plans and specification documents.

Halfacre Construction Company is proud to continue work with Hillsborough County Public Schools. Safety is our priority and moving forward to construction, COVID-19 safety measures will be implemented through the work environment on-site for the entirety of the project.

To learn more about Halfacre Construction Company and our current projects, please visit www.halfacreconstruction.com.

Facebook: www.facebook.com/HalfacreConstructionCompany

LinkedIn: www.linkedin.com/company/halfacre-construction-company

Sincerely,

Priscilla Harsham

Priscilla Harsham | Project Manager

Halfacre Construction Company

7015 Professional Pkwy E. Sarasota, FL 34240

p: 941.907.9099 | c: 941.302.4650